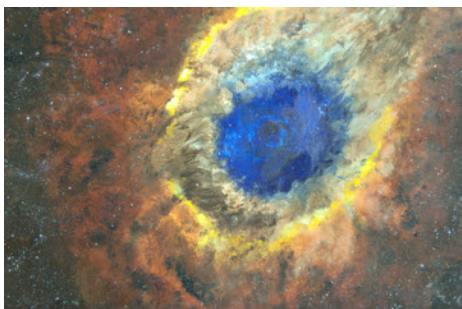


Deep Space

An Exhibition of paintings
by Wendy Carter Le Fol

Deep Space

"The world is charged with the grandeur of God" this line from a Gerard Manley Hopkins poem sums up for me what inspires me to paint. When I saw the photographs of deep space taken from the Hubble Space Telescope I was overcome by their beauty and lost in wonder at this glimpse of the universe. These paintings are a response to that glimpsed beauty and wonder: they are inspired by the Hubble photographs but ultimately I always have to consider what will work best as a painting rather than trying to reproduce a photographic image.



The Eye of God: Helix Nebula (NGC 7293)

The Helix Nebula is in the Milky Way. It is 450 light years away and 2.5 light years across. At its core are the remains of the original star.

The Whirlpool Galaxy: (M51)



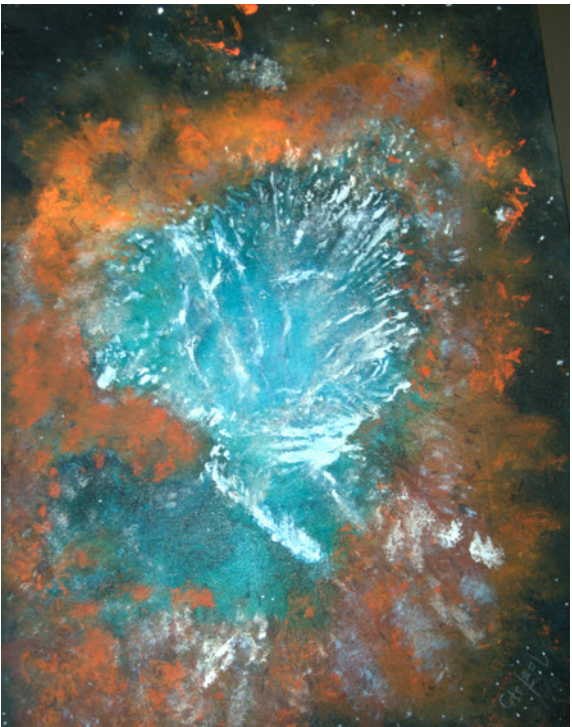
Spiral Galaxy: (NGC1672)

The spiral pattern of galaxies is governed by the way stars are formed in them. The bright red areas are where new stars are being formed. Blue is where the new young stars are.

Picture in
progress

Crab Nebula: (M1)

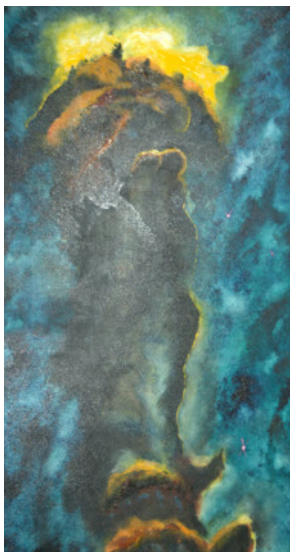
This is the result of a dying star which was eight times the size of our sun. The layers of the star fall inwards where they release so much energy that everything apart from the core is exploded away into space.



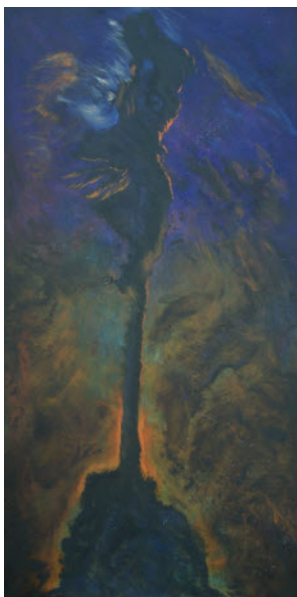
Pillars of Creation:

Eagle Nebula (M16)

So named because they are where new stars are being formed. The Eagle Nebula



is 20 light years across and individual pillars can stretch to



9.5 light years i.e. twice the distance between us and our nearest star Alpha Centauri.

Wendy Carter Le Fol



I am inspired by the natural world around me and believe with the poet Gerard Manley Hopkins that, "the world is charged with the grandeur of God". In my work I seek to convey something of this - the metaphysical beyond the visible image.